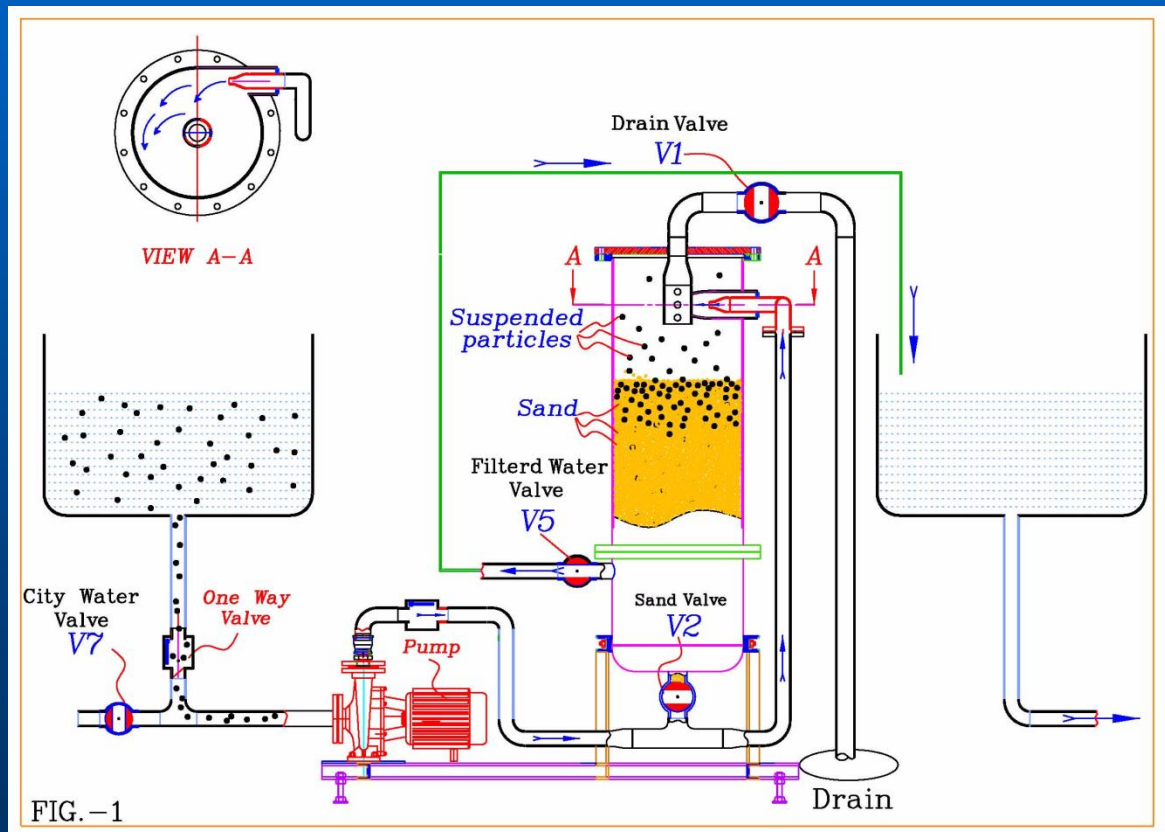


# WSNF – Whirled Sand Media Filter

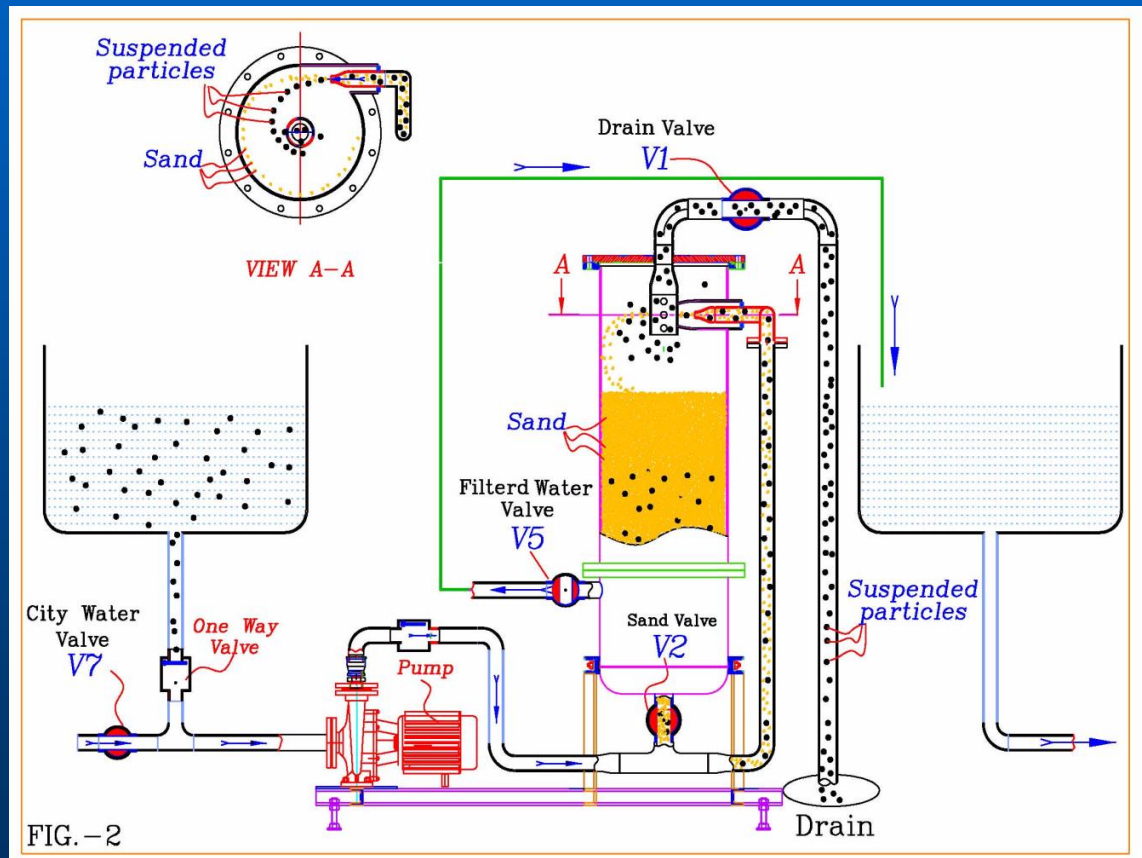




# How does it work? Fig 1 - Filtration



# How does it work? Fig 2 – sand washing



# The WSMF filter advantages

---

- Save about 95% of a common known automatic filter back wash water.
- Total use for complete sand washing is up to 5% of water needed with any other media filter.
- Filter's media does not coalesce into clusters therefore the filter does not clog.
- Not necessary to replace or refresh the sand.



# Technical data

---

- All standard filters designed to operate at a pressure up to 1600 kPa
- All standard filters being test under 2000 kPa.
- Maximum working temperature is 80°C.
- **Pump power supply is 3x380VAC**
- **Filter ing media size is 10μ, 5μ media could be supplied as well.**

